

DRIVING INSTRUCTIONS – ELECTRIC VEHICLE – CUPRA Born

1. Before setting off

Vehicle checked for any damage before setting off?

**In case of damage:
0848 824 812**

Disconnect the charge cable from the vehicle

Unlock the vehicle in the usual way with the Mobility Card. Press the Lock button on the driver's door. The cable remains at the charging point (and must be hung back in the holder). Close the charging socket flap.



Setting off

A. If you haven't done so already, log in at the checkpoint with the Mobility Card.

To start the vehicle, depress the brake. If the green "Ready" indicator does not appear in the display, press the start button "1".

Please note: if too much time elapses between your first log-in with the card and setting off, hold the Mobility card up to the card reader again.

B. When "Ready" appears in the display, the vehicle is ready to drive (noiseless). Otherwise, repeat the process. The handbrake may have to be released.

C. Engage driving position "D" (normal forward gear), "B" (forward gear with high recuperation when releasing the accelerator pedal) or "R" (reverse) as required, always keeping the brake depressed.



2. Whilst driving

The motor of an electric car is virtually silent. Up to 30 km/h, however, the vehicle generates a synthetic sound to alert pedestrians.



Eco Mode – Range

ECO mode (select “Mode” in the control panel in the upper central console “2”) is a function that optimises the range of your vehicle. It affects certain on-board systems such as the air conditioning and power steering.

An anticipatory driving style also increases the range.

Driving position “B”

In driving position “B”, the motor braking effect is more marked. This helps charge the battery more during deceleration (braking).

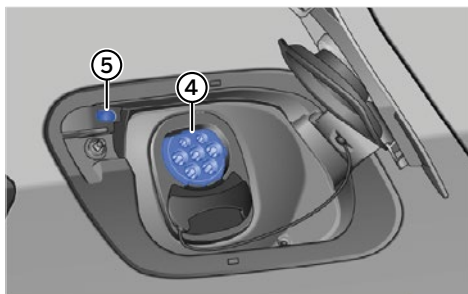
Range according to standard (WLTP)
Range under normal driving conditions

331 km
250 km

Please note: If the range is less than 20 km, the vehicle must be taken to a charging station immediately.

3. After completing your journey

Park the vehicle in reverse at the Mobility parking space – the charging socket is located on the right-hand side at the rear. Engage driving position P (park), pull the handbrake on and switch off the car. Open charge flap “3”.



Take the charge cable from the charging station and plug it into the vehicle charging socket “4”.

If available, hold the charging card, located in the card holder in the glove box, up to the charging point to start the charging process. Lock the car with the Mobility Card (hold card at checkpoint).

The charging process starts automatically. Check this by observing LED “5” at the charging socket; this will be flashing green if the car is being charged properly.

Have you removed all personal belongings from the vehicle?

Thanks for using Mobility and see you soon.

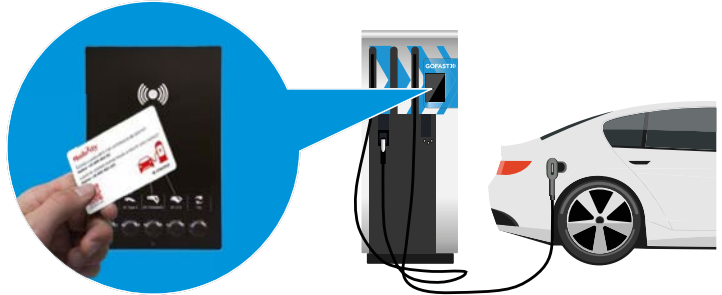
mobility

CHARGING INSTRUCTIONS – CUPRA Born

1. On-the-go charging at a GOFAST fast-charging station

See here for details of the locations:

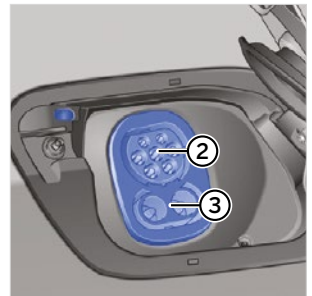
gofast.swiss/en/locations



Engage driving position P (park), pull the handbrake on and switch off the car. Open charge flap "1".

Remove the rubber caps from sockets "2" and "3" under the charge flap.

Take the charge cable from the DC charging station and plug it into sockets "2" and "3". Start the charging process using the GOFAST charging card in the vehicle's glove box. Follow the instructions on the charging point display. In the event of problems, call the number on the charging point.



Range after 20 minutes of fast charging at maximum charging rate
Time required for 80% charge

~ 160 km

The vehicle has two sockets under charge flap "1":

- "2" = AC charging, e.g. at the Mobility station.
- "3" = DC fast charging. For fast charging, sockets "2" and "3" are used in combination.

mobility

2. On-the-go charging at a Type 2 AC charging station

Proceed as for charging at a fast charging station. To charge at a Type 2 charging point, only cap “2” has to be removed. In some cases, the charge cables are permanently connected to the charging point; otherwise use the charge cable in the vehicle’s luggage compartment. Don’t forget to take this with you when you’ve finished charging.



Depending on the provider, the charging process is started automatically via an app or payment by credit card (the customer can bill Mobility if payment by credit card is required). The GOFAST charging card in the vehicle’s glove box can also be used. If necessary, contact the charging point’s provider.

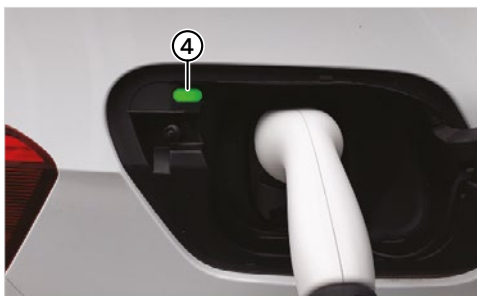
If the charging process has been started correctly, LED indicator “4” at the charging socket will flash green. Check this to make sure.

Range after 20 minutes of Type2 AC charging at maximum charging rate
Time required for 80% charge

~ 20 km
~ 4 hrs 10 mins

3. Additional charge cable

If there are no charge cables at a charging point, you’ll find one in the vehicle’s luggage compartment. This is compatible with charging stations which have a Type 2 plug (socket “2”). Don’t forget to put it back in the luggage compartment after charging.



If the charging process has been started correctly, LED indicator “4” at the charging socket will flash green. Check this to make sure.